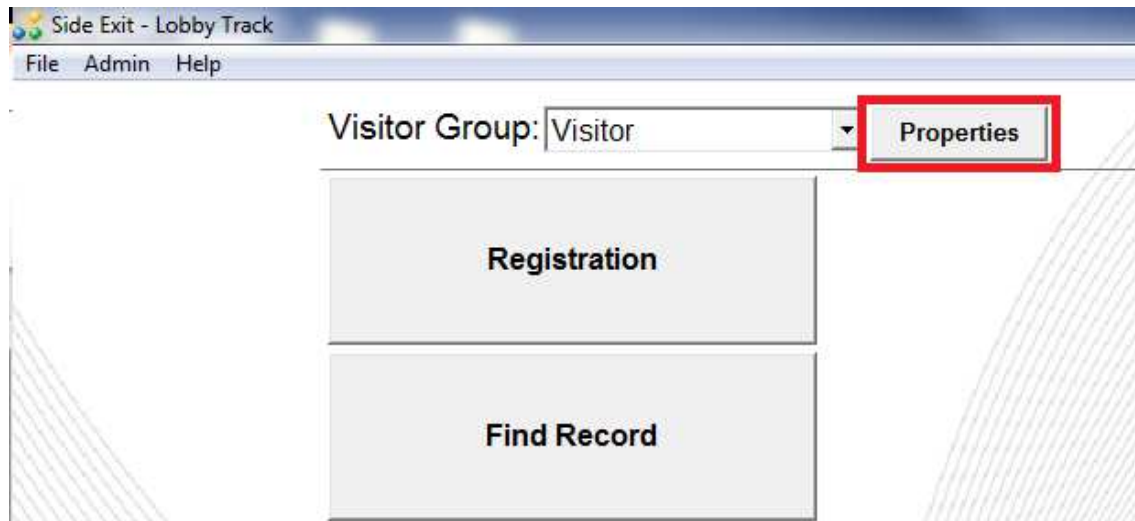
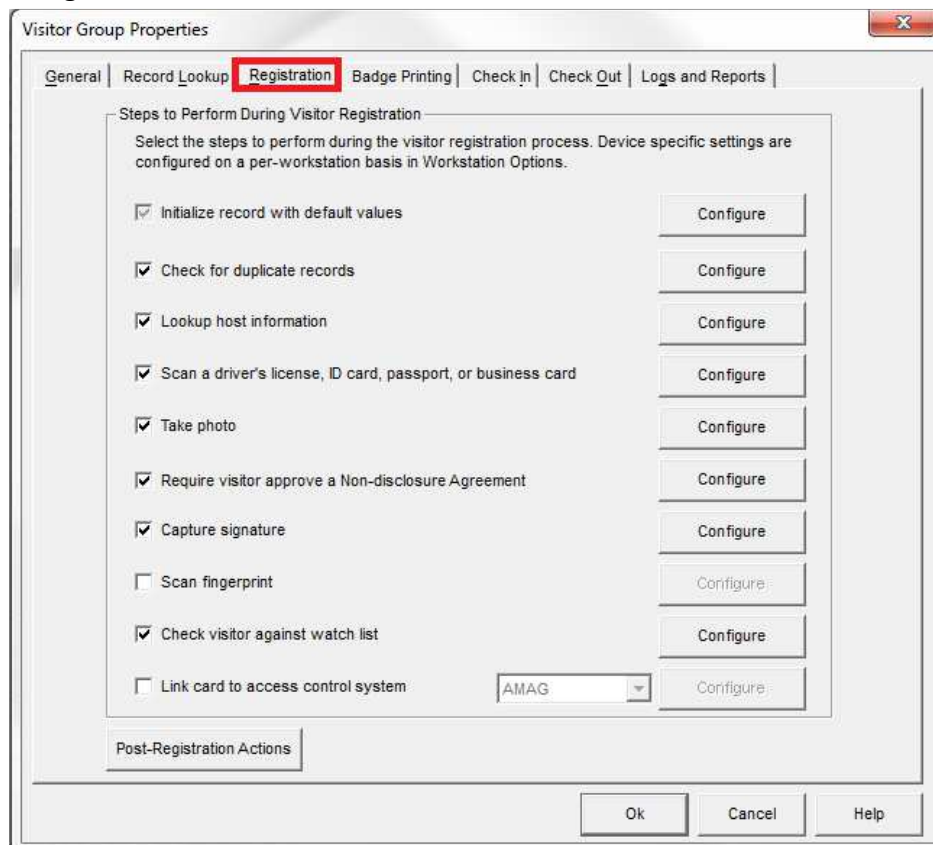


SHI C-CURE 800 Access Control System Setup

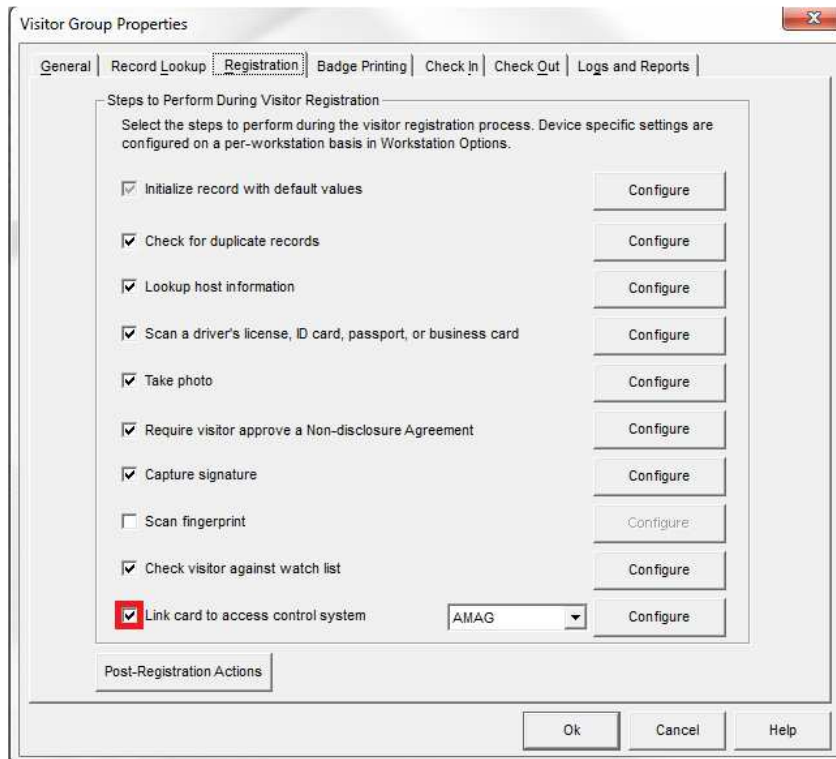
1. Open the group properties.



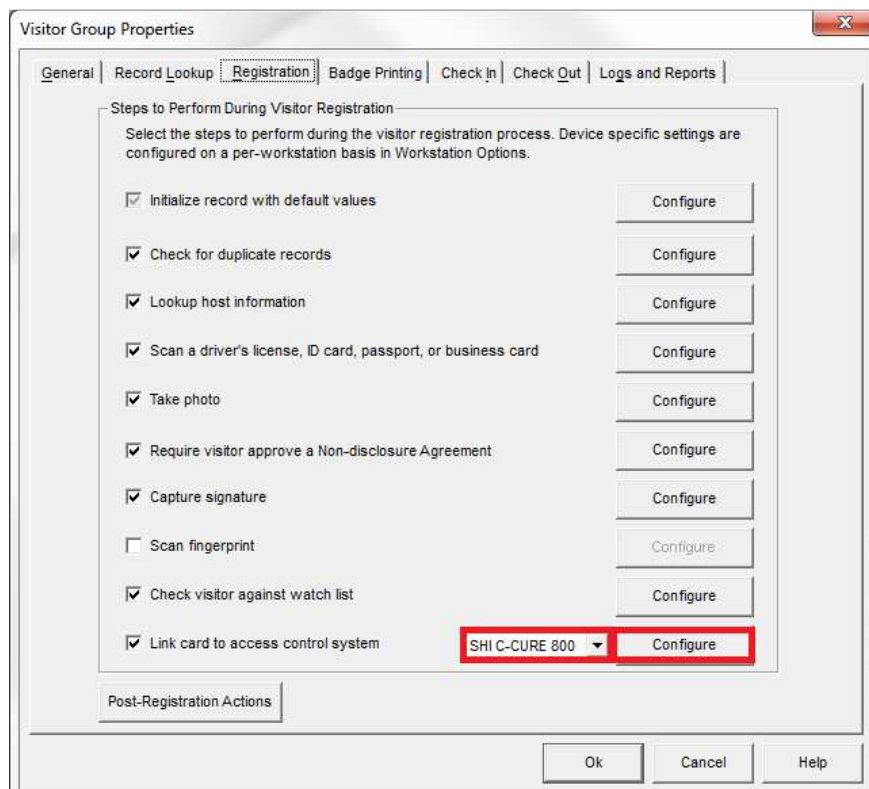
2. Open the Registration tab.



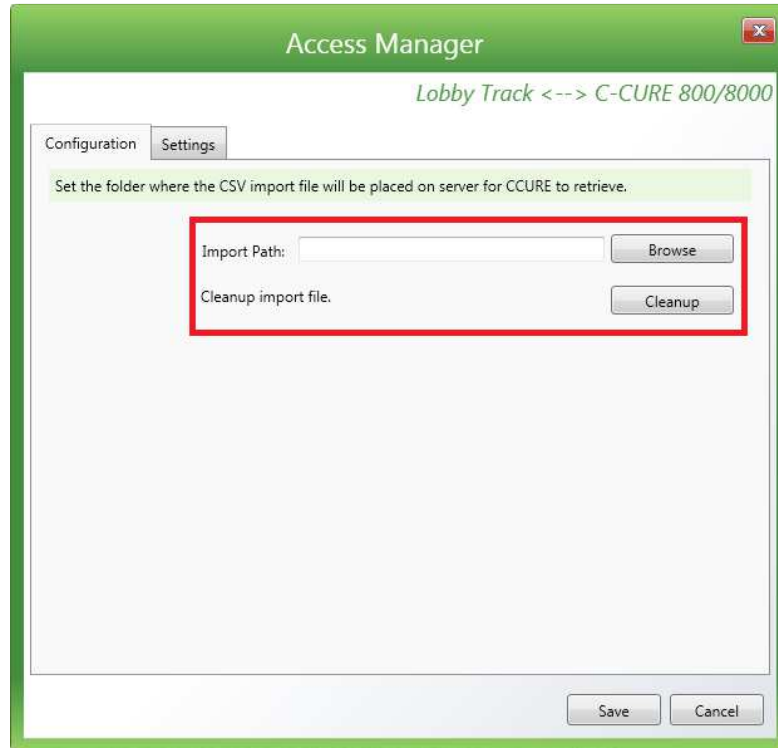
3. Select the 'Link card to access control system' option.



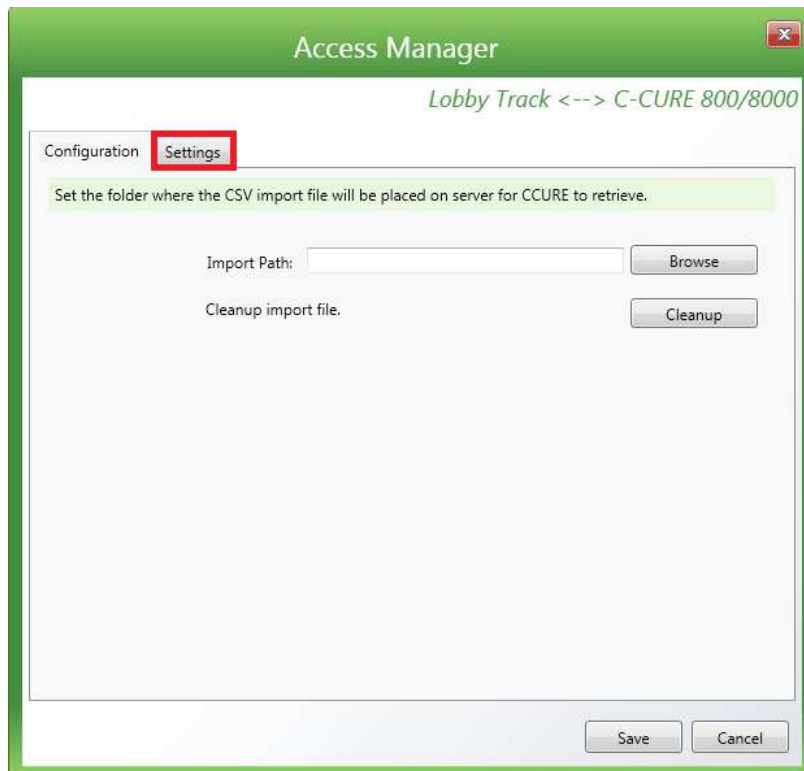
4. Select SHI C-CURE 800 from the drop-down menu and click configure.



5. Configure the software by referencing the settings retrieved from your SHI C-CURE 800 system.



6. Open the Settings tab.



7. Map the database fields between the Jolly Technologies software and the SHI C-CURE 800 system.

The screenshot shows the 'Access Manager' window with the 'Settings' tab selected. The title bar reads 'Lobby Track <--> C-CURE 800/8000'. Below the tabs, a green box contains the instruction: 'Map the CCURE fields to Lobby Track record fields. When a record is saved in Lobby Track, the mapped values will be sent to the CCURE system.' The main area features two columns: 'CCURE Fields' and 'Lobby Track Fields'. The 'CCURE Fields' column lists: Person Type, First Name, M.I., Last Name, PIN, Card #, Activation, Expiration, and Clearance1. The 'Lobby Track Fields' column contains corresponding dropdown menus for each field. A red rectangular box highlights the entire mapping area. At the bottom right, there are 'Save' and 'Cancel' buttons.

8. Click the Save button.

This screenshot is identical to the previous one, showing the 'Access Manager' window with the 'Settings' tab. The mapping area between 'CCURE Fields' and 'Lobby Track Fields' is visible. In this view, a red rectangular box highlights the 'Save' button at the bottom right of the window.

9. Click the Ok button.

