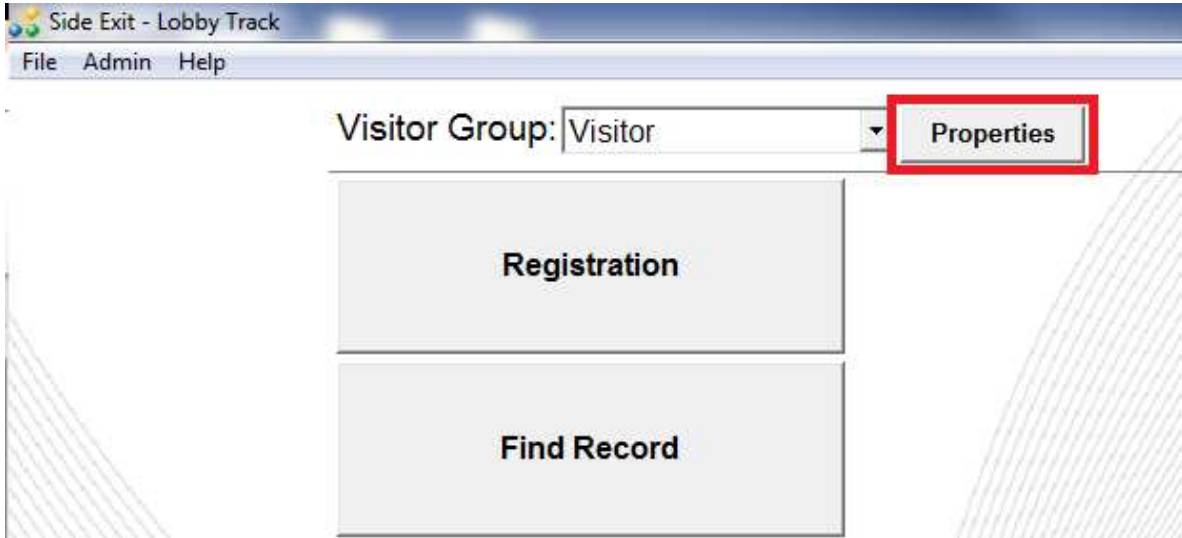
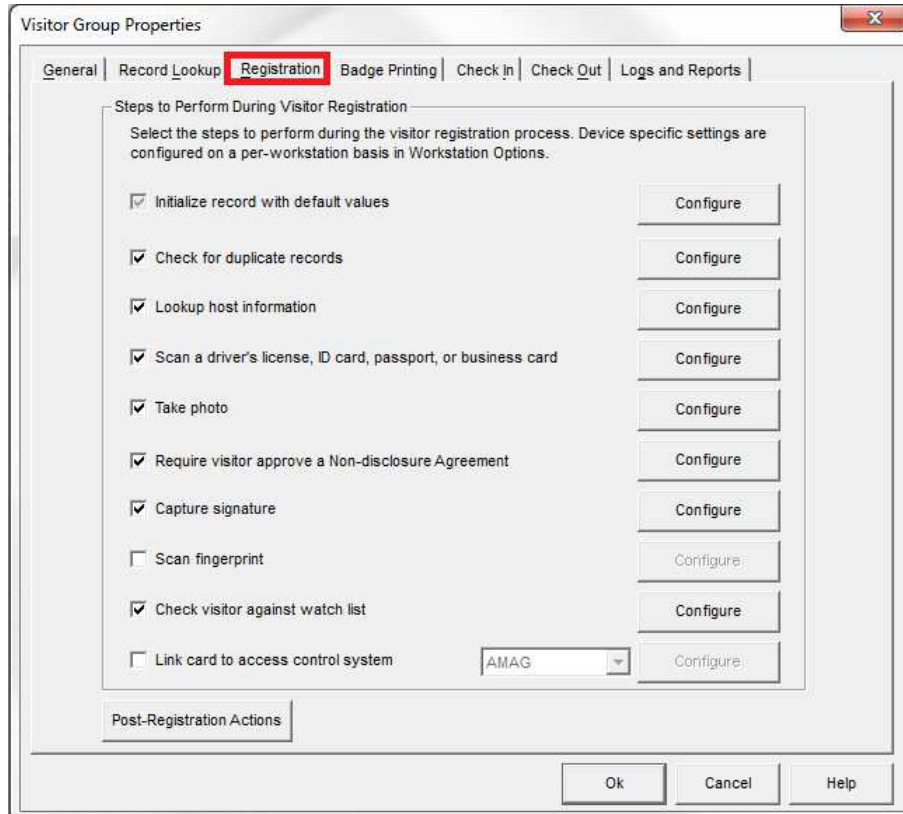


Johnson Controls Access Control System Setup

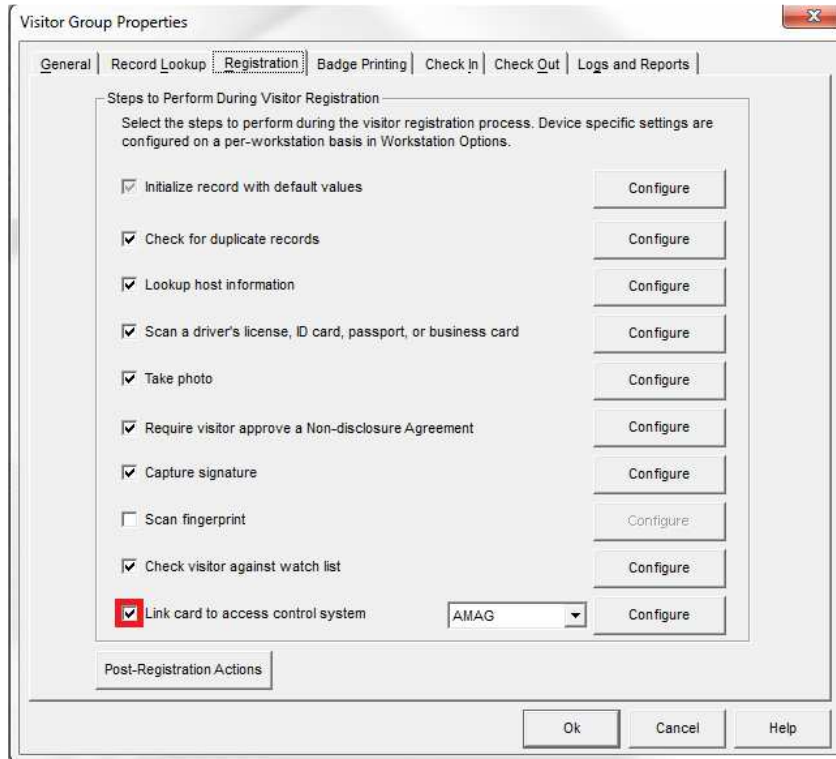
1. Open the group properties.



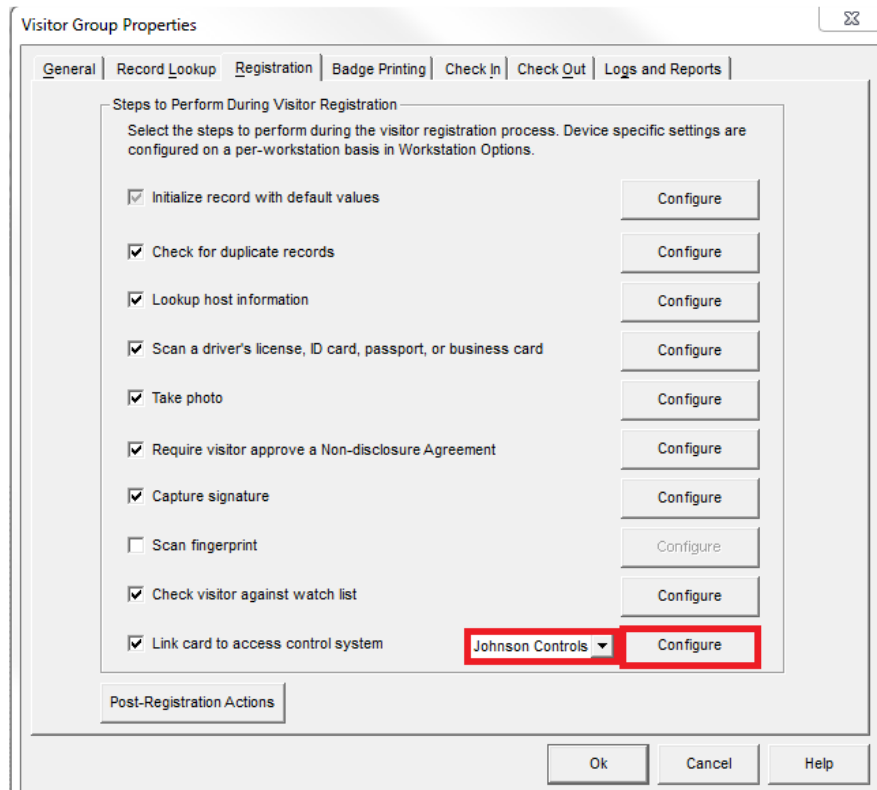
2. Open the Registration tab.



3. Select the 'Link card to access control system' option.



4. Select Johnson Controls from the drop-down menu and click configure.



5. Configure the software by referencing the settings retrieved from your Johnson Controls system.

Access Manager

Lobby Track <--> P2000

Login Settings

Login to the P2000 server to configure the data settings.

Server running P2000:

Login using the current Windows Domain account

User Name:

Password:

Login

Save Cancel

6. Open the Settings tab.

Access Manager

Lobby Track <--> P2000

Login Settings

Login to the P2000 server to configure the data settings.

Server running P2000:

Login using the current Windows Domain account

User Name:

Password:

Login

Save Cancel

7. Map the database fields between the Jolly Technologies software and the Johnson Controls system.

Access Manager Lobby Track <--> P2000

Login Settings

Map the P2000 fields to Lobby Track record fields. When a record is saved in Lobby Track, the mapped values will be sent to the P2000 system.

P2000 Login Name:

P2000 Password:

ID:

First Name:

Middle Name:

Last Name:

Badge:

Pin Code:

Start Date:

End Date:

Access Group:

Time Zone:

Facility Code:

Save Cancel

8. Click the Save button.

Access Manager Lobby Track <--> P2000

Login Settings

Map the P2000 fields to Lobby Track record fields. When a record is saved in Lobby Track, the mapped values will be sent to the P2000 system.

P2000 Login Name:

P2000 Password:

ID:

First Name:

Middle Name:

Last Name:

Badge:

Pin Code:

Start Date:

End Date:

Access Group:

Time Zone:

Facility Code:

Save Cancel

9. Click the Ok button.

