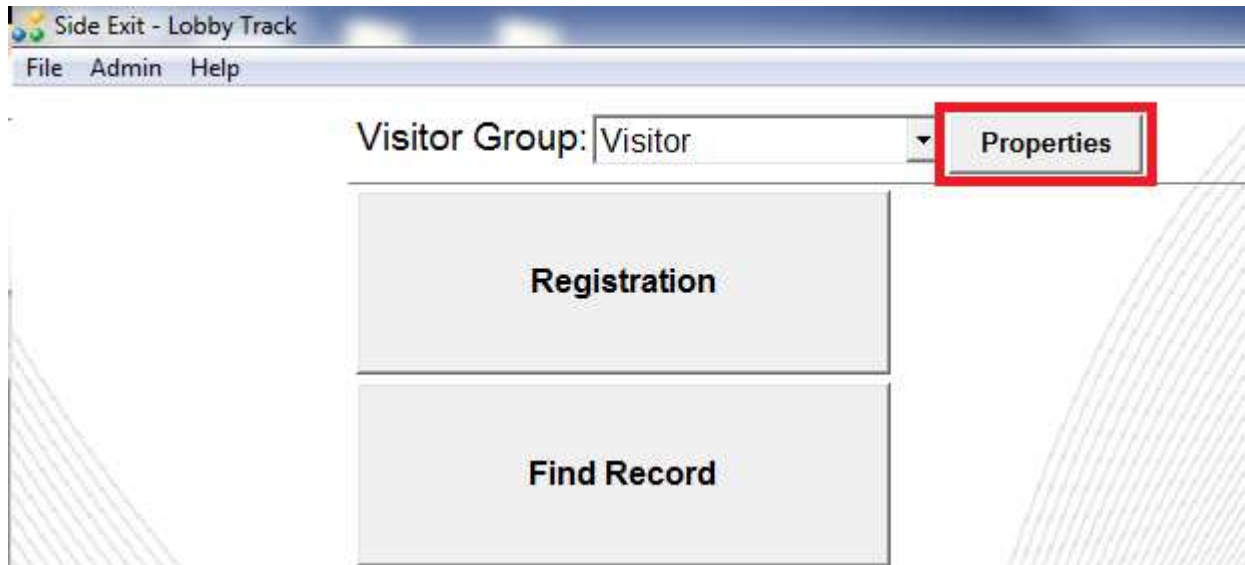
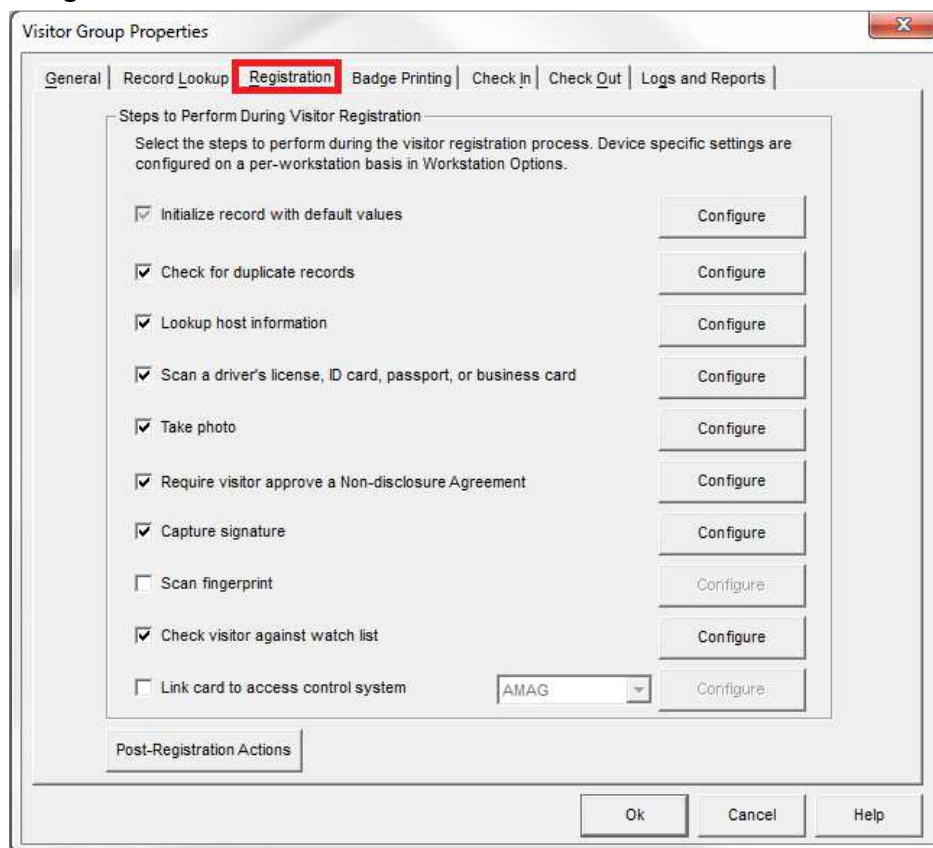


DSX Access Control System Setup

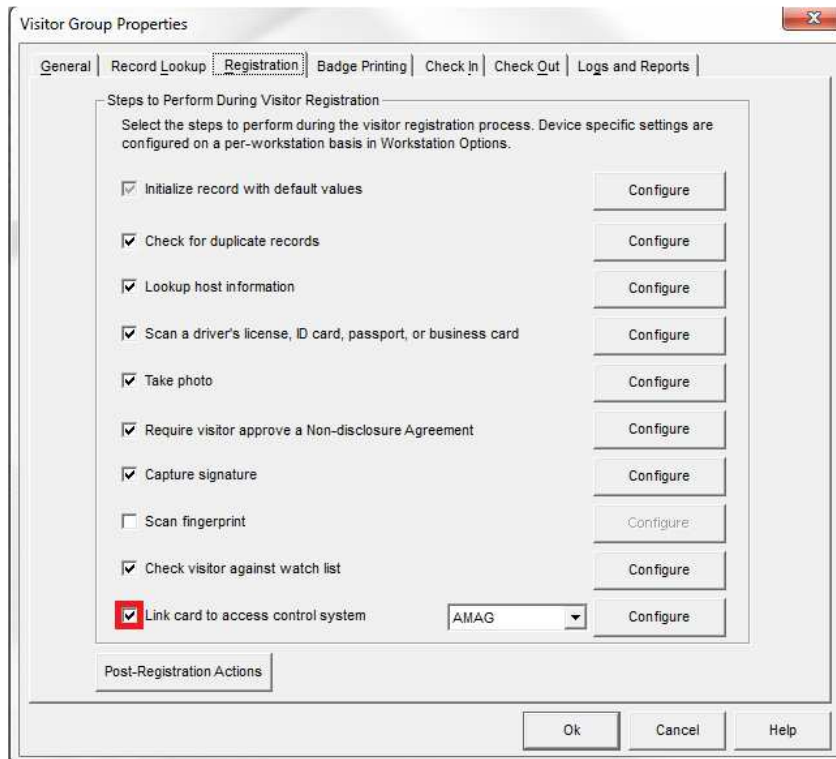
1. Open the group properties.



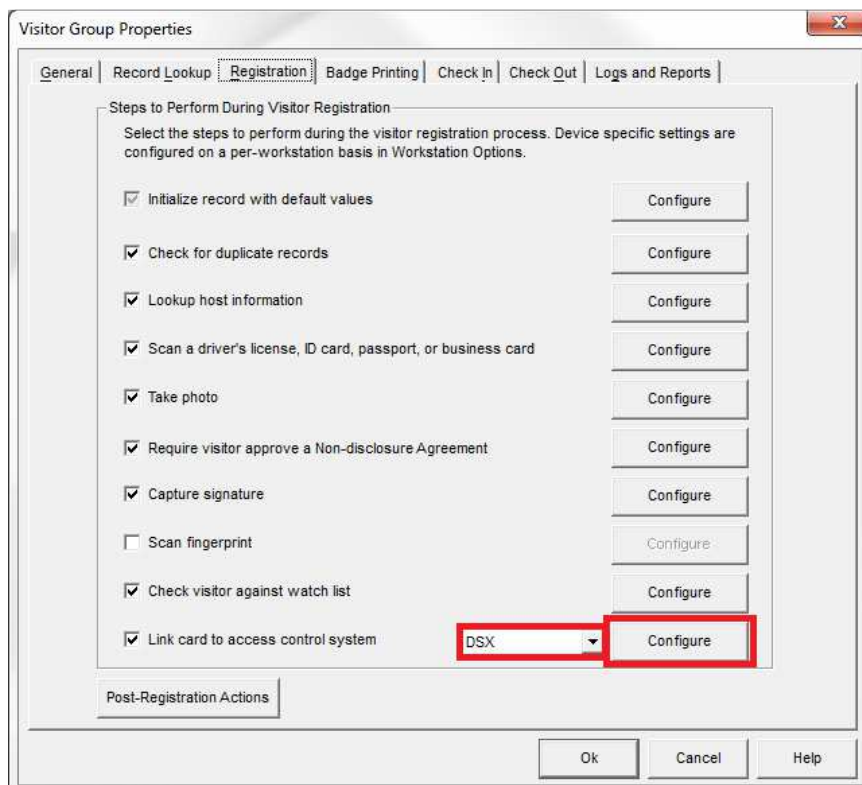
2. Open the Registration tab.



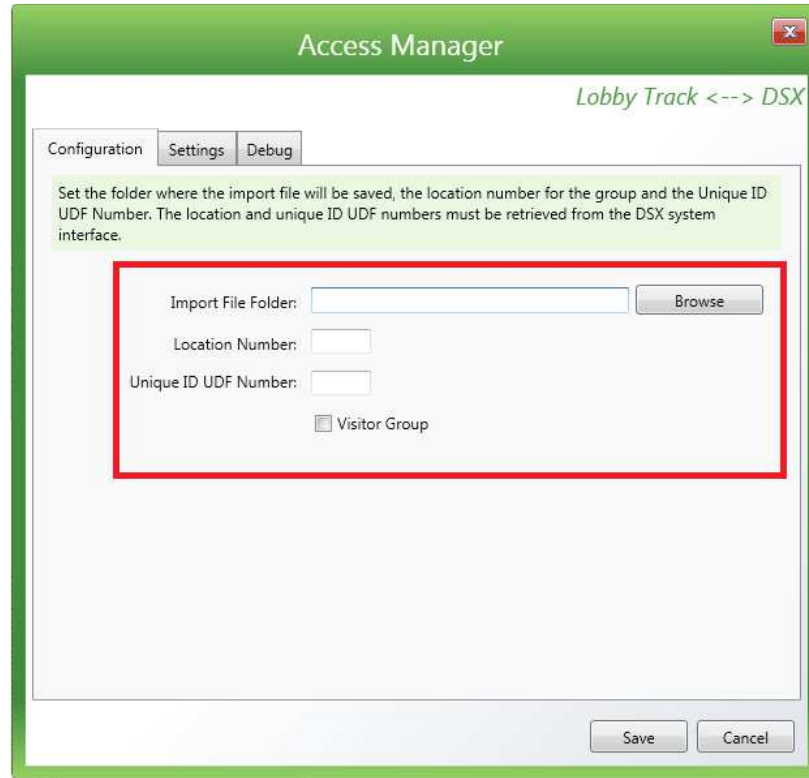
3. Select the 'Link card to access control system' option.



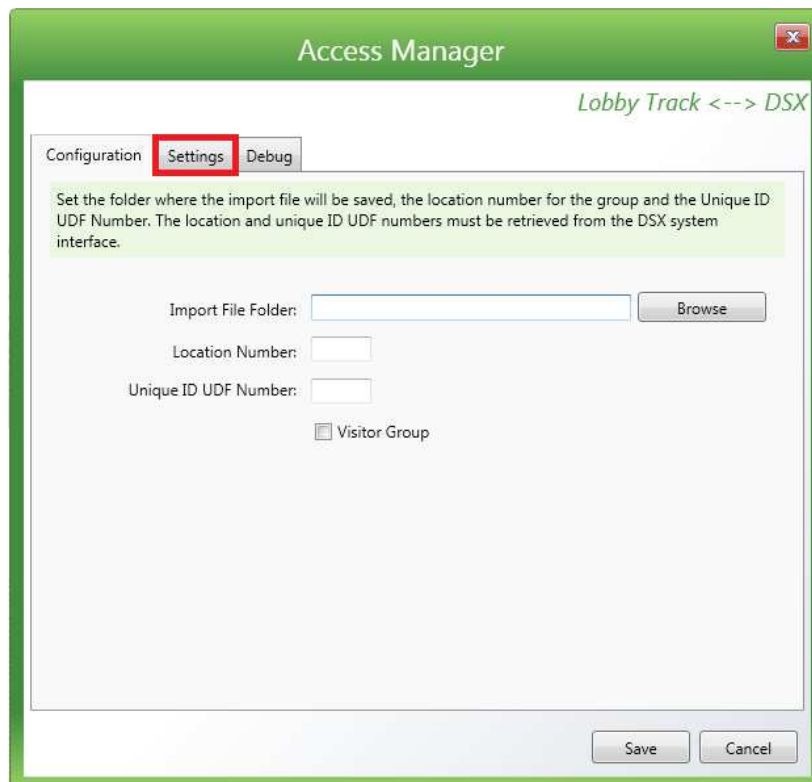
4. Select DSX from the drop-down menu and click configure.



5. Configure the software by referencing the settings retrieved from your DSX system interface.



6. Open the Settings tab.



7. Map the database fields between the Jolly Technologies software and the DSX system.

The screenshot shows the 'Access Manager' window with the 'Settings' tab selected. The window title is 'Access Manager' and the subtitle is 'Lobby Track <--> DSX'. Below the tabs, there is a text box that reads: 'Enter the DSX Access Level that visitors will be assigned and map the DSX group fields to Lobby Track record fields. When a record is saved in Lobby Track, the mapped values will be sent to the DSX system.' Below this text, there is a form with the following fields:

DSX Fields	Visitor Fields
Unique ID:	IDNumber
Card Code:	AccessRecordID
Card Number:	AccessCardNumber
First Name:	FirstName
Last Name:	LastName
Company:	Representing
Start Date:	ArrivalDate
End Date:	DepartureDate
PIN:	AccessCardPIN

The 'DSX Access Level' field is set to '1'. The 'Save' and 'Cancel' buttons are located at the bottom right of the window.

8. Click the Save button.

This screenshot is identical to the previous one, showing the 'Access Manager' window with the 'Settings' tab selected. The 'Save' button at the bottom right is now highlighted with a red box, indicating it should be clicked.

9. Click the Ok button.

