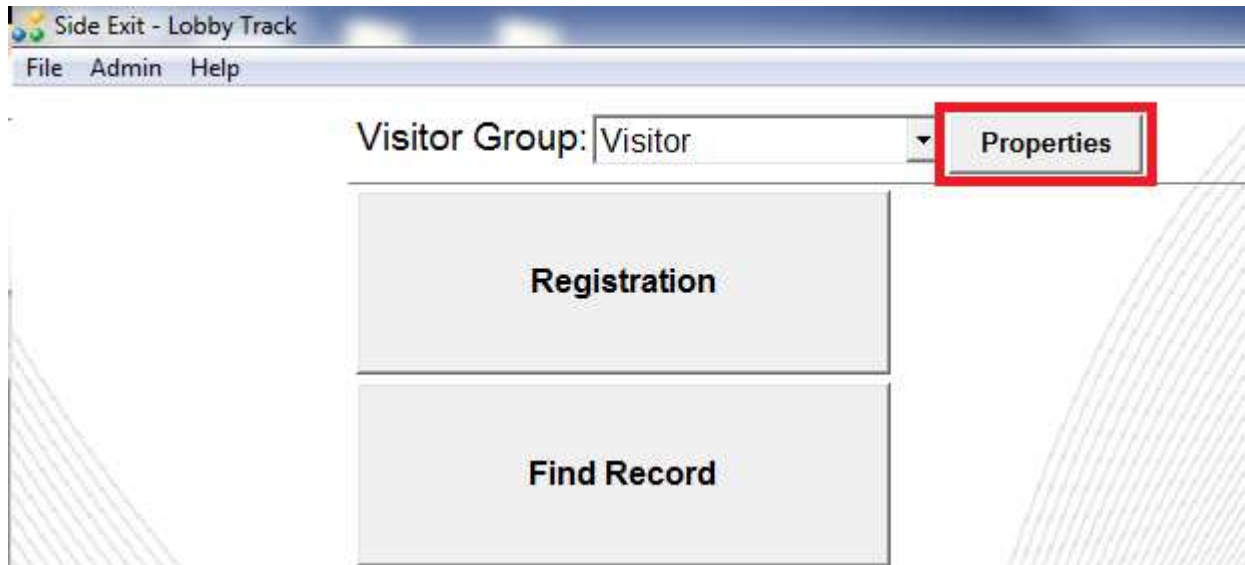
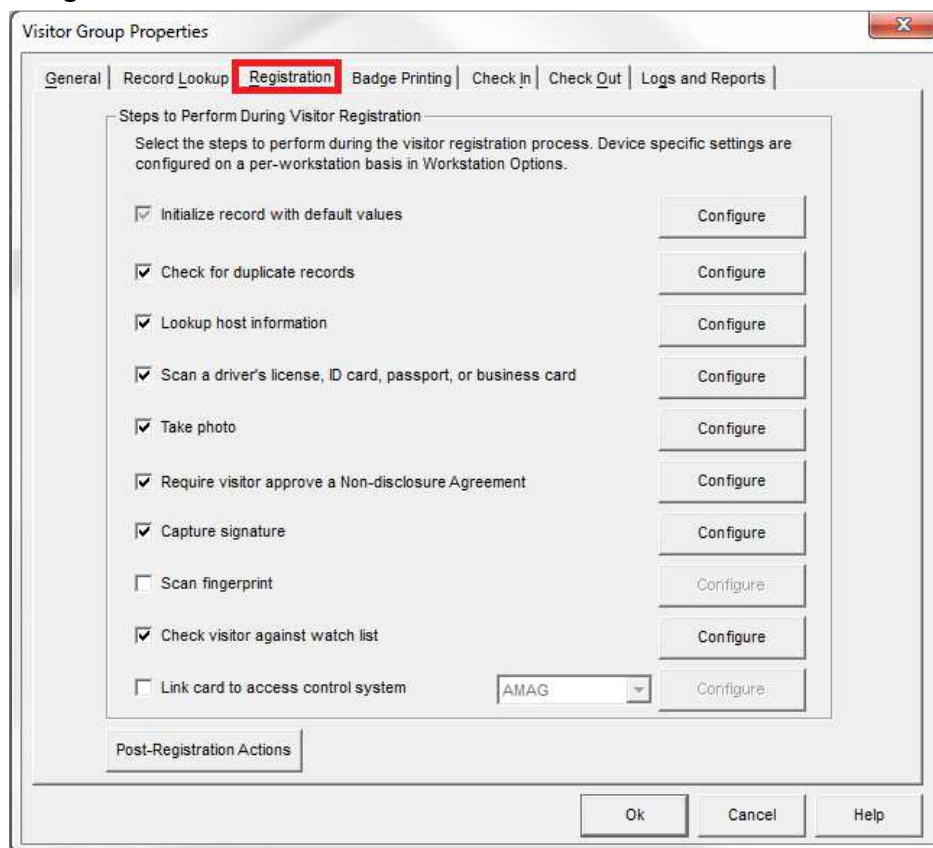


Brivo Access Control System Setup

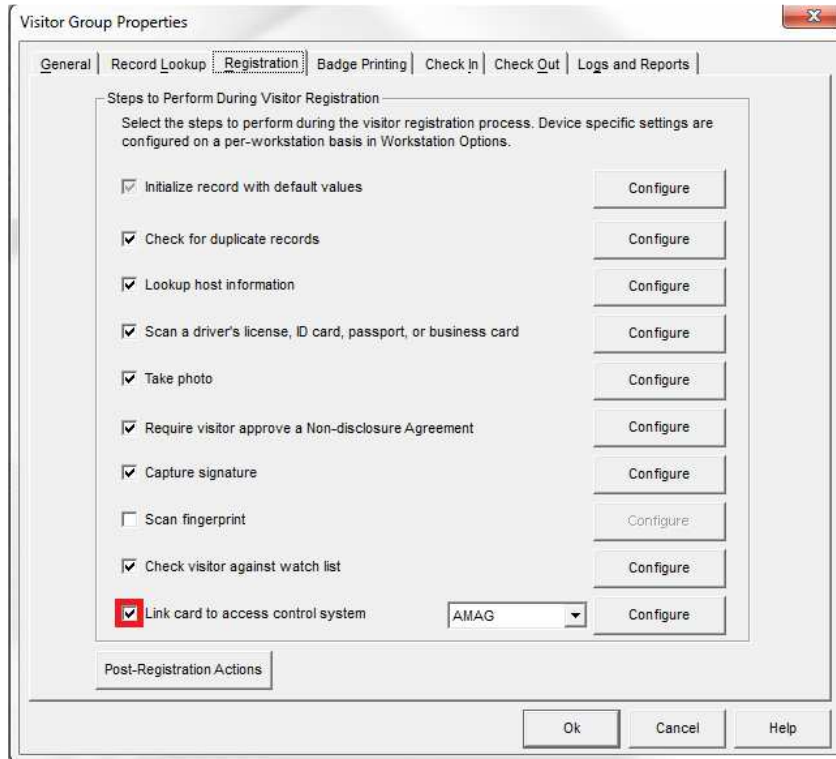
1. Open the group properties.



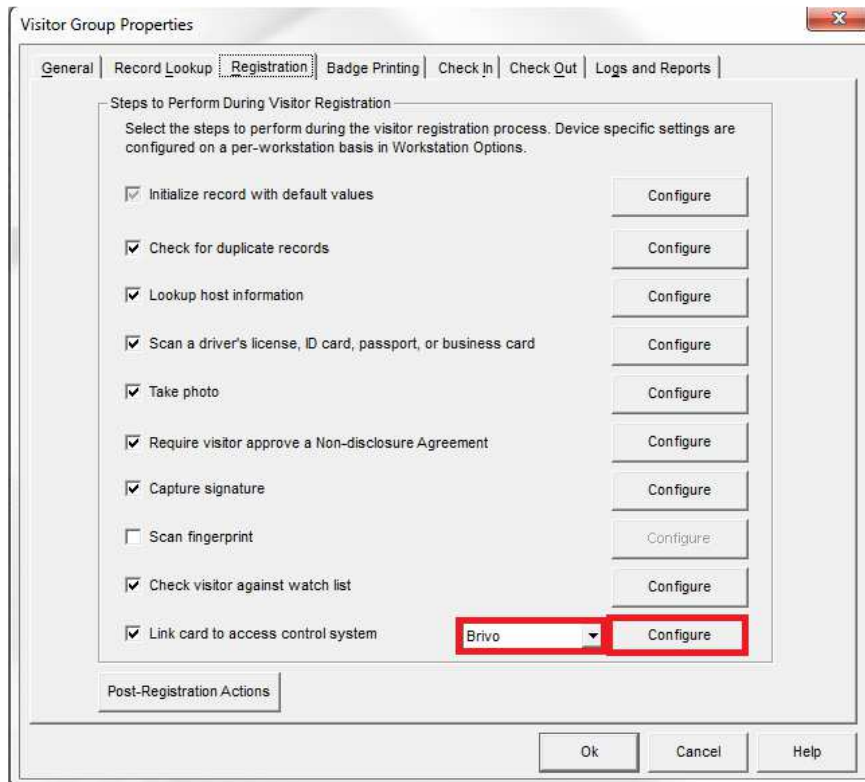
2. Open the Registration tab.



3. Select the 'Link card to access control system' option.



4. Select Brivo from the drop-down menu and click configure.



5. Configure the software by referencing the settings retrieved from your Brivo system.

The screenshot shows the 'Access Manager' window with the 'Database Field Mappings' tab selected. The window title is 'Access Manager' and the subtitle is 'Lobby Track <--> Brivo'. The 'Connection' tab is also visible. The main content area contains a green instruction box: 'Enter your Brivo ACS WebService XML account information and click Login to retrieve the list of available Brivo Groups.' Below this is a login form with two text input fields: 'Login ID:' and 'Password:'. A 'Login' button is positioned below the password field. The entire login form area is enclosed in a red rectangular box. At the bottom right of the window are 'Save' and 'Cancel' buttons.

6. Open the Database Field Mappings tab.

This screenshot is identical to the one above, showing the 'Access Manager' window with the 'Database Field Mappings' tab selected. The window title is 'Access Manager' and the subtitle is 'Lobby Track <--> Brivo'. The 'Connection' tab is also visible. The main content area contains a green instruction box: 'Enter your Brivo ACS WebService XML account information and click Login to retrieve the list of available Brivo Groups.' Below this is a login form with two text input fields: 'Login ID:' and 'Password:'. A 'Login' button is positioned below the password field. In this screenshot, the 'Database Field Mappings' tab name is highlighted with a red rectangular box. At the bottom right of the window are 'Save' and 'Cancel' buttons.

7. Map the database fields between the Jolly Technologies software and the Brivo system.

Access Manager

Lobby Track <--> Brivo

Connection Database Field Mappings

Select the Brivo Group to which Lobby Track cardholders will be added and map the Brivo record fields to Lobby Track record fields. When a record is saved in Lobby Track, the cardholder will be added to the selected Group and the mapped values will be sent to the Brivo server.

Brivo Group:

Brivo Fields	Lobby Track Visitor Fields
ID Number:	<input type="text"/>
Card Number:	<input type="text"/>
First Name:	<input type="text"/>
Last Name:	<input type="text"/>
Start Date:	<input type="text"/>
End Date:	<input type="text"/>
PIN:	<input type="text"/>

Save Cancel

8. Click the Save button.

Access Manager

Lobby Track <--> Brivo

Connection Database Field Mappings

Select the Brivo Group to which Lobby Track cardholders will be added and map the Brivo record fields to Lobby Track record fields. When a record is saved in Lobby Track, the cardholder will be added to the selected Group and the mapped values will be sent to the Brivo server.

Brivo Group:

Brivo Fields	Lobby Track Visitor Fields
ID Number:	<input type="text"/>
Card Number:	<input type="text"/>
First Name:	<input type="text"/>
Last Name:	<input type="text"/>
Start Date:	<input type="text"/>
End Date:	<input type="text"/>
PIN:	<input type="text"/>

Save Cancel

9. Click the Ok button.

